

**WD**  
WINNINGDESIGN

VICTORIA'S  
**2012**  
AWARD WINNING  
BUILDING DESIGN



**BUILDING DESIGN  
OF THE YEAR**



INSPIRATIONAL HOME DESIGN



WINNING DESIGN • ISSUE 7 • \$9.95 inc. GST

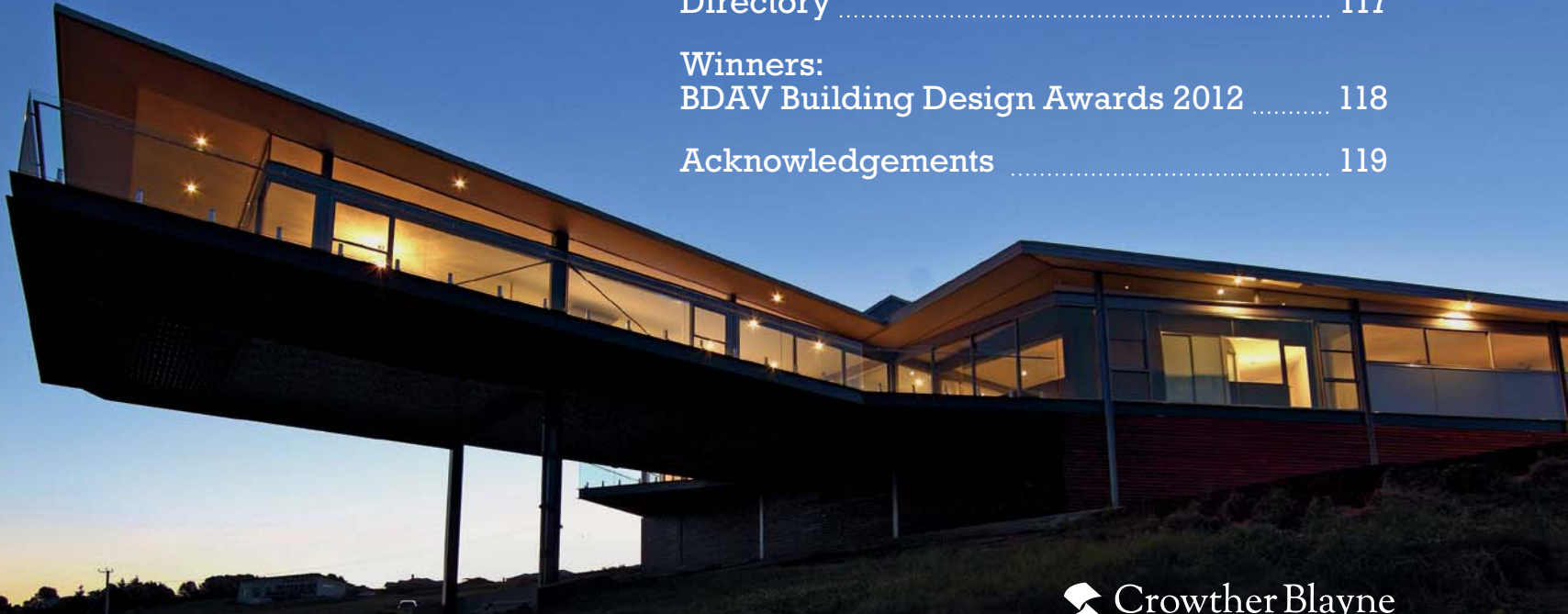






# Contents

From the Editor .....	2
Awards' Sponsors .....	2
From the BDAV President .....	6
2012 Building Design of the Year .....	8
Winners: Major Categories .....	12
Upcoming Designers .....	42
Winners: Special Categories .....	62
All the Contenders .....	79
Resource Guide .....	103
Directory .....	117
Winners: BDAV Building Design Awards 2012 .....	118
Acknowledgements .....	119



Published by Crowther Blayne Media Specialists

Phone: 1800 222 757

Fax: 1800 063 151

Email: [publications@crowtherblayne.com.au](mailto:publications@crowtherblayne.com.au)

Website: [www.crowtherblayne.com.au](http://www.crowtherblayne.com.au)

Advertising Sales Manager: Daniel Rutland

Graphic Design: Andrew Crabb, Aniko Gaspar and Byron Bailey

Layout: Andrew Crabb

Editor: Sue Guilfoyle

Production Controller: Kloe Hynds

Printed by: Newstyle Printing

8+9

---

# Winner

BUILDING DESIGN OF THE YEAR 2012





**Designer:** Clever Design  
**Phone:** (03) 6248 8283  
**Web:** [www.cleverdesign.com.au](http://www.cleverdesign.com.au)  
**Builder:** Leigh Glover  
**Photographer:** Richard Eastwood



*Entry defined with the coarse textured blade wall and exposed steel framing which continues and draws you inside.*

## Out There

**Winner:** Building Design of the Year 2012  
**Winner:** Residential Design - New Houses:  
\$500K-\$1M construction cost  
**Commendation:** Interior Design - Residential  
**Commendation:** Most Innovative Kitchen Design  
**Winner:** Most Innovative Use of Steel

## Winner

BUILDING DESIGN OF THE YEAR 2012

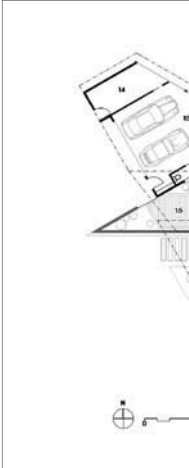
### Out There

A steeply sloping site with extensive estuary views drives this design, which is an exercise in minimalism and precision. Sharp skillion roof forms float over a dynamic arrangement of forms which are partially dug into the ground at the approach, only to erupt into a spectacular cantilevered living area and associated deck which shoot out across the contours of the site to take advantage of both north light and the 180 degree views.

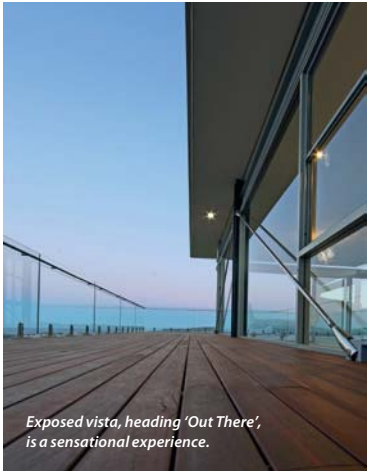
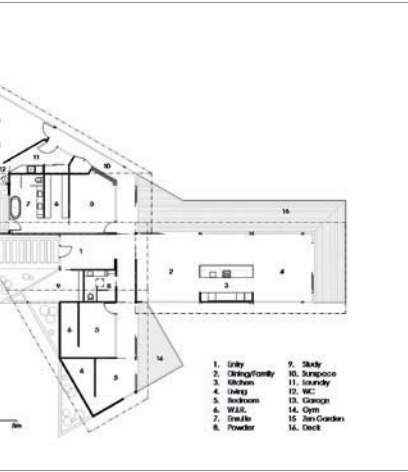
Bedroom areas are laid out perpendicular to the form containing the entry and living areas, and are safely anchored in the ground. An external space formed by rough textured blade walls and flying steel beams provides a private garden accessible from the main ensuite and, along with polished timber decking, enhances the legibility of the entry.

The designer is thoroughly at ease with his materials – steel and glass are expertly detailed, ensuring that the dynamism of the external forms runs through the interior volumes, and ceilings appear to float over walls. The interiors are suitably spare, and are wholly informed by the structure, with the open plan kitchen elements stopping short of the ceiling so as not to interrupt the flow of space. Gleaming polished concrete floors provide a backdrop to shining white cabinetry and a cantilevered island bench. Frameless panels of translucent glass slide to provide privacy as required, and to allow for views throughout the house.

The totality of this design is testament to its author's skills. The execution is exceptional, and all elements have been carefully considered and work together to provide a beautifully resolved building with no extraneous detail. Most of all, the house illustrates the designer's ability to conceive of a building as not just a shelter, but as an experience, earning the project a worthy award for Building Design of the Year.







18+19

---

# Winner

RESIDENTIAL DESIGN – NEW HOUSES: \$500K-\$1M CONSTRUCTION COST



*The main living room's dramatic cantilever allows northern passive solar gain.*

---

10117





*Private entertaining deck for adolescent living.*



*Powder room with minimalist feel.*

**Designer:** Clever Design  
**Phone:** (03) 6248 8283  
**Web:** [www.cleverdesign.com.au](http://www.cleverdesign.com.au)  
**Builder:** Leigh Glover  
**Photographer:** Richard Eastwood

## Out There

A steeply sloping site with extensive estuary views drives this design, which is an exercise in minimalism and precision. Sharp skillion roof forms float over a dynamic arrangement of forms which are partially dug into the ground at the approach, only to erupt into a spectacular cantilevered living area and associated deck which shoot out across the contours of the site to take advantage of both north light and the 180 degree views. Bedroom areas are laid out perpendicular to the form containing the entry and living areas, and are safely anchored in the ground. An external space formed by rough textured blade walls and flying steel beams provides a private garden accessible from the main ensuite and, along with polished timber decking, enhances the legibility of the entry.

The designer is thoroughly at ease with his materials – steel and glass are expertly detailed, ensuring that the dynamism of the external forms runs through the interior volumes, and ceilings appear to float over walls. The interiors are suitably spare, and are wholly informed by the structure, with the open plan kitchen elements stopping short of the ceiling so as not to interrupt the flow of space. Gleaming polished concrete floors provide a backdrop to shining white cabinetry and a cantilevered island bench. Frameless panels of translucent glass slide to provide privacy as required, and to allow for views throughout the house.

The totality of this design is testament to its author's skills. All elements work together to provide a beautifully resolved building, with no extraneous detail. Most of all, the house illustrates the designer's ability to conceive of a building as not just a shelter, but as an experience.